

## **6.0 Storage Inventory/TBQ**

**This section explains how customers can view their daily and monthly storage balances and how customers can view their imbalance positions (TBQs) at month-end.**

**To navigate easily through this document, open the bookmark feature on the left of your screen and use the links to jump to the following sections:**

### **6.1 Customer Account Maintenance**

## 6.1 Customer Account Maintenance

How to View a Customer's Transportation Balance Quantity, (TBQ).

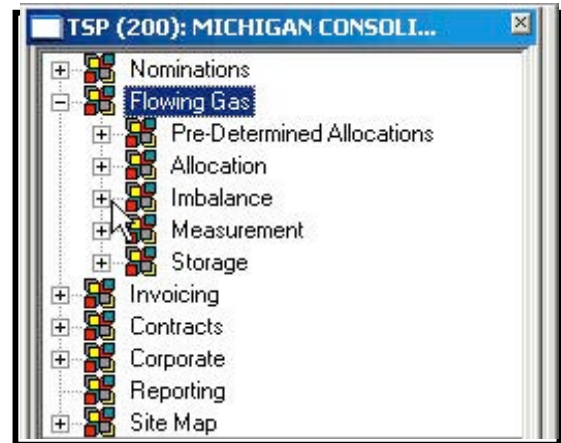
1

Click the plus sign (+) in the tree view to expand the Flowing Gas options.



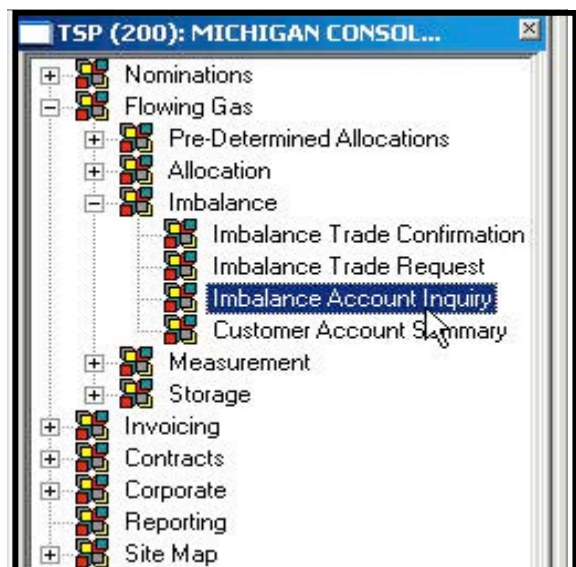
2

Click the plus sign (+) to expand the Imbalance options.



3

Double-click "Imbalance Account Inquiry"



# 4

The Customer Account Maintenance screen opens.

**TSP (200): MICHIGAN CONSOLIDATED GAS CO.: Customer Account Maintenance**

Acct ID: <NEW> [...] N>

Primary Contract: [ ] ... [ ]

BP No.: [ ] [ ]

Account Type: [ ]

Operational Impact Area: SYSTEMWIDE

Reporting Sub Account Type: [ ]

CAW Posting: No Posting Manual Post Quantity

Contact: [ ]

Phone No. / Ext: ( ) - [ ] [ ]

Filter Criteria

Contract: [ ] Beg. Prod. Month: [ ]/ [ ]/ [ ] Beg. Acct. Month: 10/2006

End Prod. Month: [ ]/ [ ]/ [ ] End Acct. Month: 10/2006

**Contracts** | Balance | Activity

	Contract No.	...	TOS	Assoc. Eff Dt From	Assoc. Eff Dt To
1	[ ]	[ ]	[ ]	[ ]	Open Ended
2	[ ]	[ ]	[ ]	[ ]	Open Ended
3	[ ]	[ ]	[ ]	[ ]	Open Ended
4	[ ]	[ ]	[ ]	[ ]	Open Ended
5	[ ]	[ ]	[ ]	[ ]	Open Ended
6	[ ]	[ ]	[ ]	[ ]	Open Ended
7	[ ]	[ ]	[ ]	[ ]	Open Ended
8	[ ]	[ ]	[ ]	[ ]	Open Ended
9	[ ]	[ ]	[ ]	[ ]	Open Ended
10	[ ]	[ ]	[ ]	[ ]	Open Ended
11	[ ]	[ ]	[ ]	[ ]	Open Ended
12	[ ]	[ ]	[ ]	[ ]	Open Ended

Query More >>> All Add Help Links Close

5

To display an Accounts pick list, click the pick button to the right of the Acct ID field.

TSP (200): MICHIGAN CONSOLIDATED GAS CO.: Customer Account Maintenance

Acct ID: <NEW> [...] N>

Primary Contract: [ ] [ ]

BP No.: [ ] [ ]

Account Type: [ ]

Operational Impact Area: SYSTEMWIDE [ ]

Reporting Sub Account Type [ ]

CAW Posting: No Posting [ ] Manual Post Quantity

Contact: [ ]

Phone No. / Ext: [ ] - [ ]

Filter Criteria

Contract: [ ] [ ]

Beg. Prod. Month: [ ] / [ ] [ ]

Beg. Acct. Month: 10/2006 [ ]

End Prod. Month: [ ] / [ ] [ ]

End Acct. Month: 10/2006 [ ]

**Contracts** | Balance | Activity

	Contract No.	...	TOS	Assoc. Eff Dt From		Assoc. Eff Dt To
1	[ ]	[ ]	[ ]	[ ]	Open Ended	[ ]
2	[ ]	[ ]	[ ]	[ ]	Open Ended	[ ]
3	[ ]	[ ]	[ ]	[ ]	Open Ended	[ ]
4	[ ]	[ ]	[ ]	[ ]	Open Ended	[ ]
5	[ ]	[ ]	[ ]	[ ]	Open Ended	[ ]
6	[ ]	[ ]	[ ]	[ ]	Open Ended	[ ]
7	[ ]	[ ]	[ ]	[ ]	Open Ended	[ ]
8	[ ]	[ ]	[ ]	[ ]	Open Ended	[ ]
9	[ ]	[ ]	[ ]	[ ]	Open Ended	[ ]
10	[ ]	[ ]	[ ]	[ ]	Open Ended	[ ]
11	[ ]	[ ]	[ ]	[ ]	Open Ended	[ ]
12	[ ]	[ ]	[ ]	[ ]	Open Ended	[ ]

Query | More >>> | All | Add | Help | Links | Close

6

Select an Account from the list and click on the OK button.

**Pick for Customer Account Screen** [X]

Query Filters:  Show All Columns  Query On Return  Advanced Filter System Default Save Setup

	Account ID	Primary Contract #	Primary K Eff Date From	Primary K Eff Date To	Operational Impact	TOS	Account Type	Business Party #	Business Party Name
Operator			<=	>=					
Value			10/4/2006	10/4/2006					
Sort Sequence	0	1	0	0	0	0	0	0	0
Sort Order		Ascending							
Case Sensitive	<input type="checkbox"/>	<input type="checkbox"/>	<input type="checkbox"/>	<input type="checkbox"/>	<input type="checkbox"/>	<input type="checkbox"/>	<input type="checkbox"/>	<input type="checkbox"/>	<input type="checkbox"/>

Query Results:

1	477	1001996	3/1/2006	12/31/9000	SYS	DRYIMB	NON-ALPENA DRY	167770	CIMA ENERGY, LTD.
2	478	1001997	3/1/2006	12/31/9000	SYS	ALPDYIM	ALPENA DRY IMBAI	167770	CIMA ENERGY, LTD.

Query More >>> All Cancel **OK**

7

The header auto-populates with the information from the account that was selected (the Acct ID, Primary Contract, BP No, Account Type, and TOS fields).

**Header Section**

	Contract No.	TOS	Assoc. Eff Dt From	Assoc. Eff Dt To
1 Q	1001985	DRYPPOOL	3 / 1 /2006	Open Ended
2 Q	1001986	DRYPPOOL	3 / 1 /2006	Open Ended
3 Q	1001987	DRYPPOOL	3 / 1 /2006	Open Ended
4				Open Ended
5				Open Ended
6				Open Ended
7				Open Ended
8				Open Ended
9				Open Ended
10				Open Ended
11				Open Ended
12				Open Ended
13				Open Ended
14				Open Ended

# 8

Click on the Balance Tab.

The Balance tab displays the quantities rolled up to a monthly level. To filter the grid by production or accounting month dates, use the Filter Criteria section to enter beginning and ending production or accounting month dates.

**Filter Section**

Acct ID: 477  
Primary Contract: 1001996  
BP No.: 167770  
Operational Impact Area: SYSTEMWIDE  
CAW Posting: No Posting  
Account Type: NON-ALPENA DRY IMBALANCE  
Reporting Sub Account Type:   
Contact:   
Phone No. / Ext: ( ) -

**Filter Criteria**

Contract:   
Beg. Prod. Month: / /   
Beg. Acct. Month: / /   
End Prod. Month: / /   
End Acct. Month: / /

**Balance Tab**

	Early CICO	Prod. Month	Acct. Month	Beg. Balance	Alloc. Rec. Net of Fuel	Alloc. Del.	PPA Qty.	Original Imbalance	Trades	CICO	Adjustments	Open Balance
1 Q	<input type="checkbox"/>	4 / 1 /2006	4 / 1 /2006	0	206,648	7,032	0	199,616	0	0	0	199,616
2	<input type="checkbox"/>											
3	<input type="checkbox"/>											
4	<input type="checkbox"/>											
5	<input type="checkbox"/>											
6	<input type="checkbox"/>											
7	<input type="checkbox"/>											
8	<input type="checkbox"/>											
9	<input type="checkbox"/>											
10	<input type="checkbox"/>											
<b>Totals:</b>												
		206,648	7,032	0	199,616	0	0	0	0	0	0	199,616
		Alloc. Rec.	Alloc. Del.	PPA	Imbalance	Trades	CICO	Adjust.	Open Balance			

**These totals are the sum of each column in the grid.**

Query More >>> All Update Help Links Close

# 9

Click on the Activity Tab.

The activity tab displays the data at a daily level by contract.

**P. TSP (200): MICHIGAN CONSOLIDATED GAS CO.: Customer Account Maintenance**

Acct ID: 477 [...] N->  
 Primary Contract: 1001996 [...] [...]  
 BP No.: 167770 CIMA ENERGY, LTD. Account Type: NON-ALPENA DRY IMBALANCE  
 Operational Impact Area: SYSTEMWIDE Reporting Sub Account Type  
 CAW Posting: No Posting Manual Post Quantity Contact:  
 Phone No. / Ext: ( ) -

Filter Criteria  
 Contract: [...] Beg. Prod. Month: / / Beg. Acct. Month: / /  
 End Prod. Month: / / End Acct. Month: / /

**Contracts** | **Balance** | **Activity**

	Activity Date	Prod. Month	Acct. Month	PPA	Contract No.	Alloc. Rec. Net of Fuel	Alloc. Del.	Imbalance	Trades	CICO	Adjust.
1 Q	4 / 1 /2006	4 / 1 /2006	4 / 1 /2006	<input type="checkbox"/>	1001985	2,959	92	2,867	0	0	0
2 Q	4 / 1 /2006	4 / 1 /2006	4 / 1 /2006	<input type="checkbox"/>	1001986	199,874	6,810	193,064	0	0	0
3 Q	4 / 1 /2006	4 / 1 /2006	4 / 1 /2006	<input type="checkbox"/>	1001987	3,815	130	3,685	0	0	0
4				<input type="checkbox"/>							
5				<input type="checkbox"/>							
6				<input type="checkbox"/>							
7				<input type="checkbox"/>							
8				<input type="checkbox"/>							
9				<input type="checkbox"/>							

Totals:  
 206,648 7,032 0 199,616 0 0 0 199,616  
 Alloc. Rec. Alloc. Del. PPA Imbalance Trades CICO Adjust. Open Balance

Query More >>> All Update Help Links > Close

On both the Balance and Activity tabs, the balance displays on the grid.

**TSP (200): MICHIGAN CONSOLIDATED GAS CO.: Customer Account Maintenance**

Acct ID: 477  
Primary Contract: 1001996  
BP No.: 167770 CIMA ENERGY, LTD.  
Account Type: NON-ALPENA DRY IMBALANCE  
Operational Impact Area: SYSTEMWIDE  
Reporting Sub Account Type: [ ]  
CAW Posting: No Posting Manual Post Quantity  
Contact: [ ]  
Phone No. / Ext: [ ]

Filter Criteria  
Contract: [ ] Beg. Prod. Month: [ ] End Prod. Month: [ ]

**Contract** **Balance** **Activity**

	Early CICO	Prod. Month	Acct. Month	Beg. Balance	Alloc. Rec. Net of Fuel	Alloc. Del.	PPA Qty.	Original Imbalance	Trades	CICO	Adjustments	Open Balance
1 Q	<input type="checkbox"/>	4 / 1 /2006	4 / 1 /2006	0	206,648	7,032	0	199,616	0	0	0	199,616
2	<input type="checkbox"/>											
3	<input type="checkbox"/>											
4	<input type="checkbox"/>											
5	<input type="checkbox"/>											
6	<input type="checkbox"/>											
7	<input type="checkbox"/>											
8	<input type="checkbox"/>											
9	<input type="checkbox"/>											
10	<input type="checkbox"/>											
Totals:												
	206,648	7,032	0	199,616	0	0	0	199,616				199,616
	Alloc. Rec.	Alloc. Del.	PPA	Imbalance	Trades	CICO	Adjust.	Open Balance				

Buttons: Query, More >>>, All, Update, Help, Links, Close